

2023/2025

# Rapport Pfsense

---

**configuration LAN, WAN, DMZ**

Zafir Adamsah

# SOMMAIRE

1

## INSTALLATION DE L'ISO

*page 1..2.3.4.5*

2

## CONFIGURATION DU SERVEUR

*page 6..7.8*

3

## CONFIGURATION DU LAN ET WAN

*page 9.10.11*

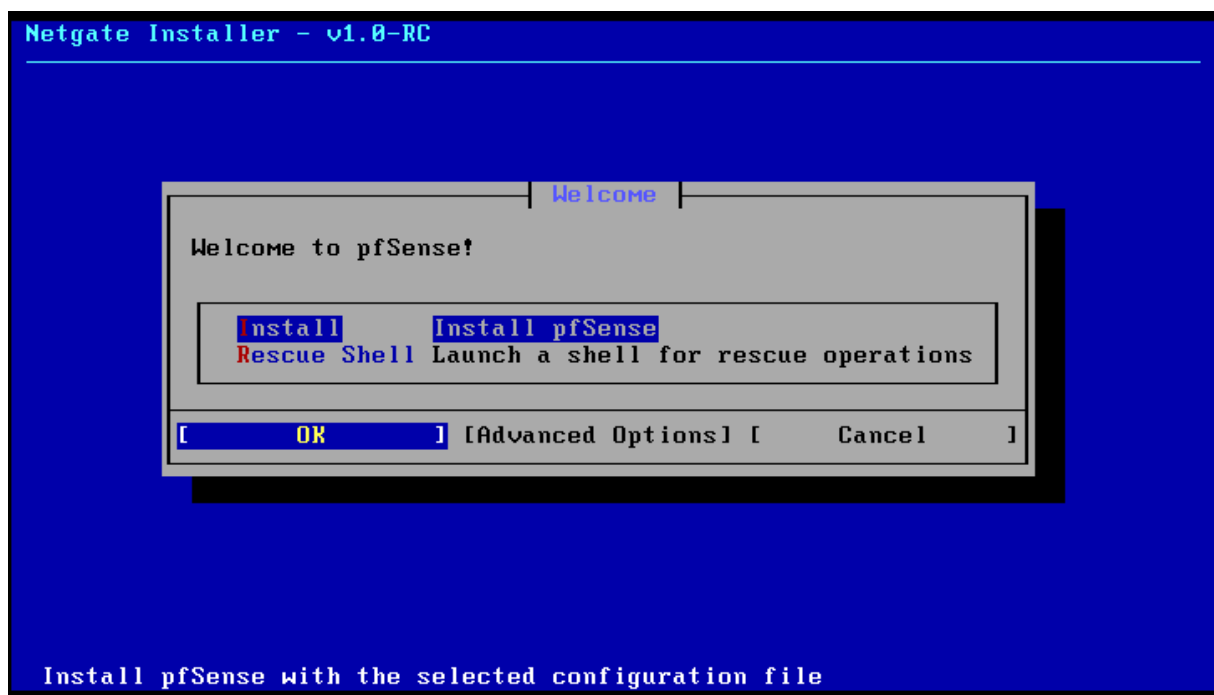
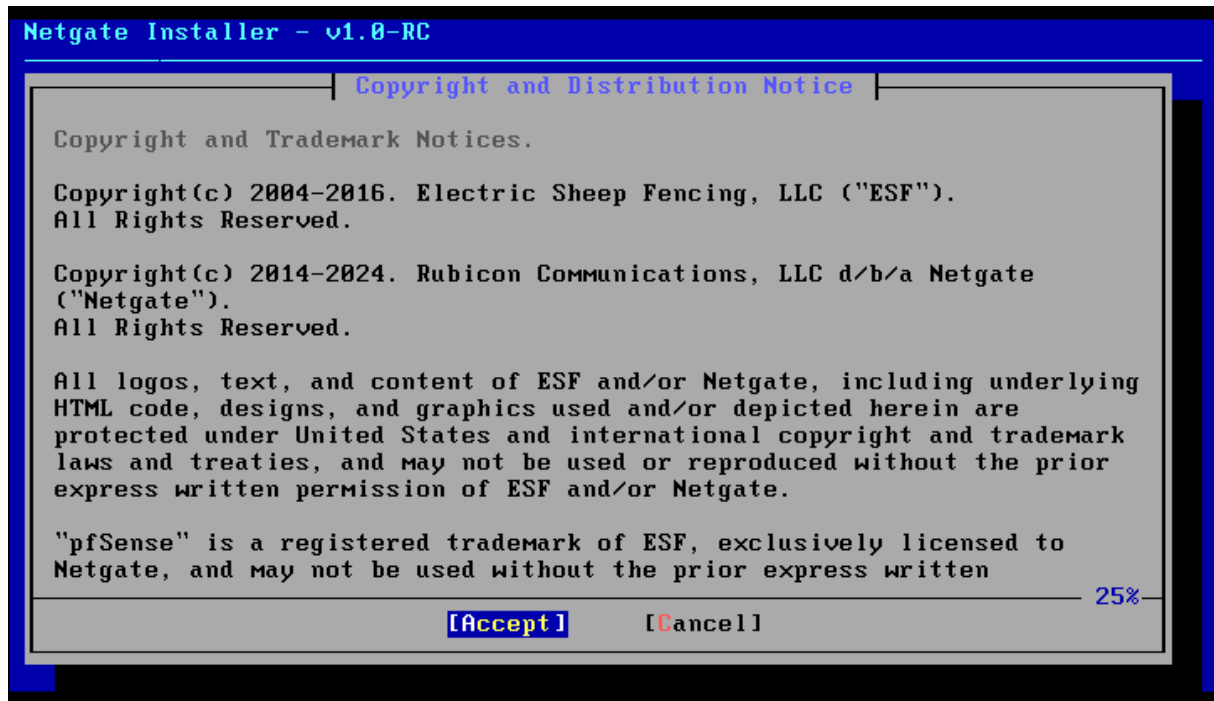
4

## ACCÈS À L'INTERFACE ET CONFIGURATION DE LA DMZ

*page 12.13.14.15*

Installation pfsense

Installation de l'iso



Netgate Installer - v1.0-RC

WAN Interface Assignment and Configuration

Please select the WAN interface.

**em0** em0 00:0c:29:12:cc:32 (active)

[ OK ] [Cancel]

Netgate Installer - v1.0-RC

WAN (em0) Network Mode Setup

Adjust the network operation mode for the WAN (em0) interface if necessary.

>>> Continue	Proceed with the installation
M Interface Mode	DHCP (client)
U VLAN Settings	VLAN Tagging disabled
U Use local resolver	false

[ OK ] [Cancel]

Continue with the displayed settings

Active Subscription Validation

This device does not have an active pfSense Plus subscription.

To purchase pfSense Plus:

Software Store: <https://www.netgate.com/purchase-plus>

NDI: ece0 f014 dcd7 263f c580

and select 'Retry Validation' once purchase is complete.

Or select 'Install CE' to install pfSense CE software.

[ Install CE ]

[ Retry Validation ]

[ Cancel ]

ZFS Virtual Device Type Configuration

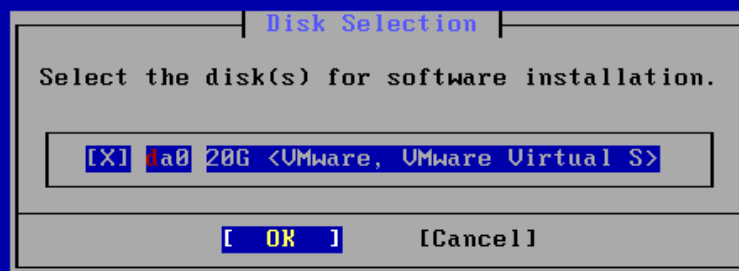
Select the ZFS Virtual Device configuration type.

stripe Stripe - No Redundancy

[ OK ]

[ Cancel ]

[1+ Disks] Striping provides maximum storage but no redundancy



#### Installation Details

```
Updating pfSense-core repository catalogue...
Fetching meta.conf: . done
Fetching data.pkg: . done
Processing entries: . done
pfSense-core repository update completed. 4 packages processed.
Updating pfSense repository catalogue...
Fetching meta.conf: . done
Fetching data.pkg: ..... done
Processing entries:
Processing entries..... done
pfSense repository update completed. 541 packages processed.
All repositories are up to date.
The following 1 package(s) will be affected (of 0 checked):

New packages to be INSTALLED:
  pkg: 1.21.3_4 [pfSense]

Number of packages to be installed: 1

The process will require 46 MiB more space.
17 MiB to be downloaded.
```

#### Installation Details

```
pkg-static: POST-INSTALL script failed

Installing pfSense base

Updating pfSense-core repository catalogue...
Fetching meta.conf:
Fetching data.pkg:
pfSense-core repository is up to date.
Updating pfSense repository catalogue...
Fetching meta.conf:
Fetching data.pkg:
pfSense repository is up to date.
All repositories are up to date.
The following 1 package(s) will be affected (of 0 checked):

New packages to be INSTALLED:
    pfSense-base: 2.8.0.b.20250410.0059 [pfSense-core]

Number of packages to be installed: 1

The process will require 121 MiB more space.
119 MiB to be downloaded.
```

#### Installation Details

```
GPUs starting with the HD7000 series / Tahiti) or i915kms (for Intel
APUs starting with HD3000 / Sandy Bridge) through kld_list in
/etc/rc.conf. radeonkms for older AMD GPUs can be loaded and there are
some positive reports if EFI boot is NOT enabled.

For amdgpu: kld_list="amdgpu"
For Intel: kld_list="i915kms"
For radeonkms: kld_list="radeonkms"

Please ensure that all users requiring graphics are members of the
"video" group.

Please note that this package was built for FreeBSD 15.0.
If this is not your current running version, please rebuild
it from ports to prevent panics when loading the module.

pfSense Post Installation setup

pfSense Post Installation setup .. done.
```

< OK >

```
Generating RRD graphs...done.
Starting syslog...done.
Starting CRON... done.
pfSense 2.8.0-BETA amd64 20250410-0059
Bootup complete

FreeBSD/amd64 (pfSense.home.arpa) (ttyv0)

VMware Virtual Machine - Netgate Device ID: ece0f014dcd7263fc580

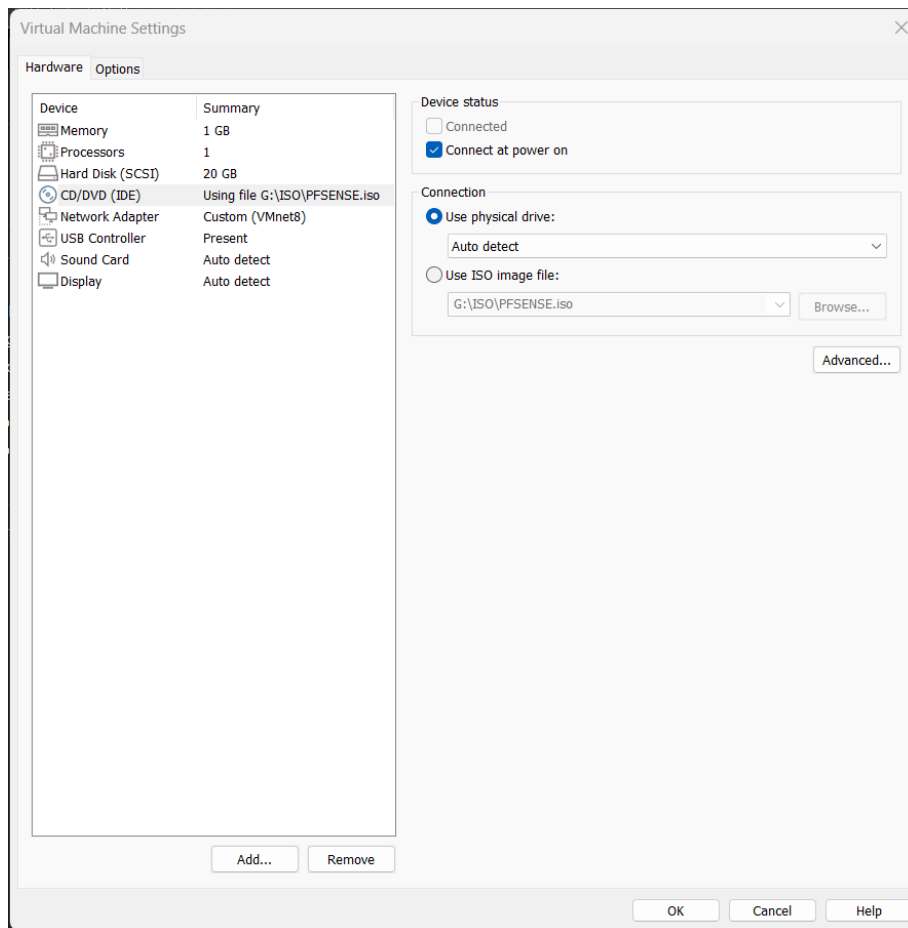
*** Welcome to pfSense 2.8.0-BETA (amd64) on pfSense ***

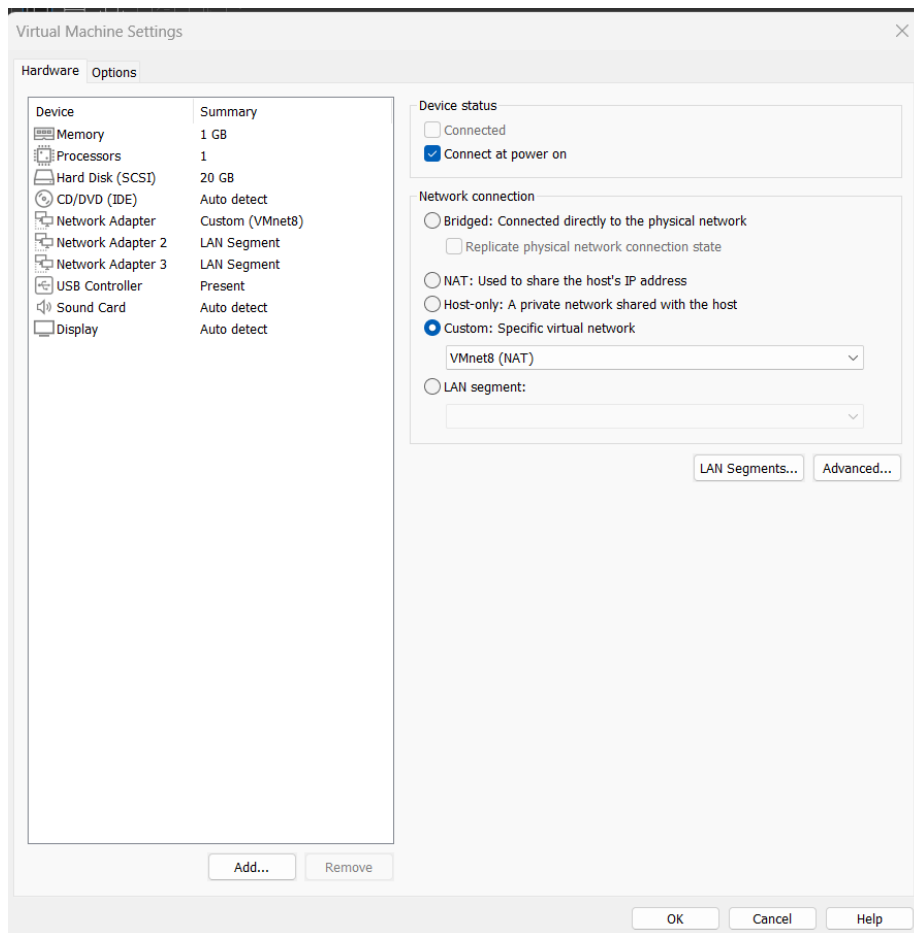
WAN (wan) -> em0 -> v4/DHCP4: 192.168.133.149/24

0) Logout / Disconnect SSH          9) pfTop
1) Assign Interfaces                10) Filter Logs
2) Set interface(s) IP address      11) Restart GUI
3) Reset admin account and password 12) PHP shell + pfSense tools
4) Reset to factory defaults        13) Update from console
5) Reboot system                   14) Enable Secure Shell (sshd)
6) Halt system                     15) Restore recent configuration
7) Ping host                       16) Restart PHP-FPM
8) Shell

Enter an option: █
```







say no here and use the webConfigurator to configure VLANs later, if required.

Should VLANs be set up now [y:n]? n

If the names of the interfaces are not known, auto-detection can be used instead. To use auto-detection, please disconnect all interfaces before pressing 'a' to begin the process.

Enter the WAN interface name or 'a' for auto-detection  
(em0 em1 em2 or a): em0

Enter the LAN interface name or 'a' for auto-detection  
NOTE: this enables full Firewalling/NAT mode.  
(em1 em2 a or nothing if finished): em1

Enter the Optional 1 interface name or 'a' for auto-detection  
(em2 a or nothing if finished): em2

The interfaces will be assigned as follows:

WAN -> em0  
LAN -> em1  
OPT1 -> em2

Do you want to proceed [y:n]? █

```
7) Ping host                      16) Restart PHP-FPM
8) Shell

Enter an option: 2

Available interfaces:

1 - WAN (em0 - dhcp)
2 - LAN (em1)
3 - OPT1 (em2)

Enter the number of the interface you wish to configure: 2

Configure IPv4 address LAN interface via DHCP? (y/n) n

Enter the new LAN IPv4 address. Press <ENTER> for none:
> 192.168.1.1

Subnet masks are entered as bit counts (as in CIDR notation) in pfSense.
e.g. 255.255.255.0 = 24
     255.255.0.0   = 16
     255.0.0.0     = 8

Enter the new LAN IPv4 subnet bit count (1 to 32):
> 24
```

```
Configure IPv4 address LAN interface via DHCP? (y/n) n

Enter the new LAN IPv4 address. Press <ENTER> for none:
> 192.168.1.1

Subnet masks are entered as bit counts (as in CIDR notation) in pfSense.
e.g. 255.255.255.0 = 24
     255.255.0.0   = 16
     255.0.0.0     = 8

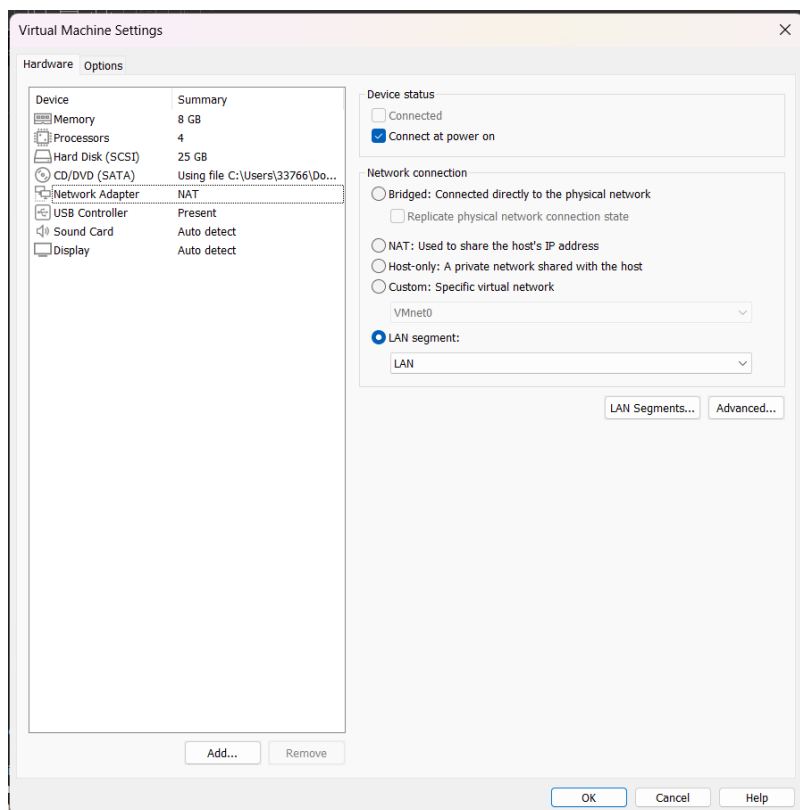
Enter the new LAN IPv4 subnet bit count (1 to 32):
> 24

For a WAN, enter the new LAN IPv4 upstream gateway address.
For a LAN, press <ENTER> for none:
>

Configure IPv6 address LAN interface via DHCP6? (y/n) n

Enter the new LAN IPv6 address. Press <ENTER> for none:
>

Do you want to enable the DHCP server on LAN? (y/n) y
Enter the start address of the IPv4 client address range: 192.168.1.10
Enter the end address of the IPv4 client address range: 192.168.1.100
```



```
Starting CRON... done.
pfSense 2.8.0-BETA amd64 20250410-0059
Bootup complete

FreeBSD/amd64 (pfSense.home.arp) (ttyv0)

VMware Virtual Machine - Netgate Device ID: 7105fccf1f3e0d7a778b

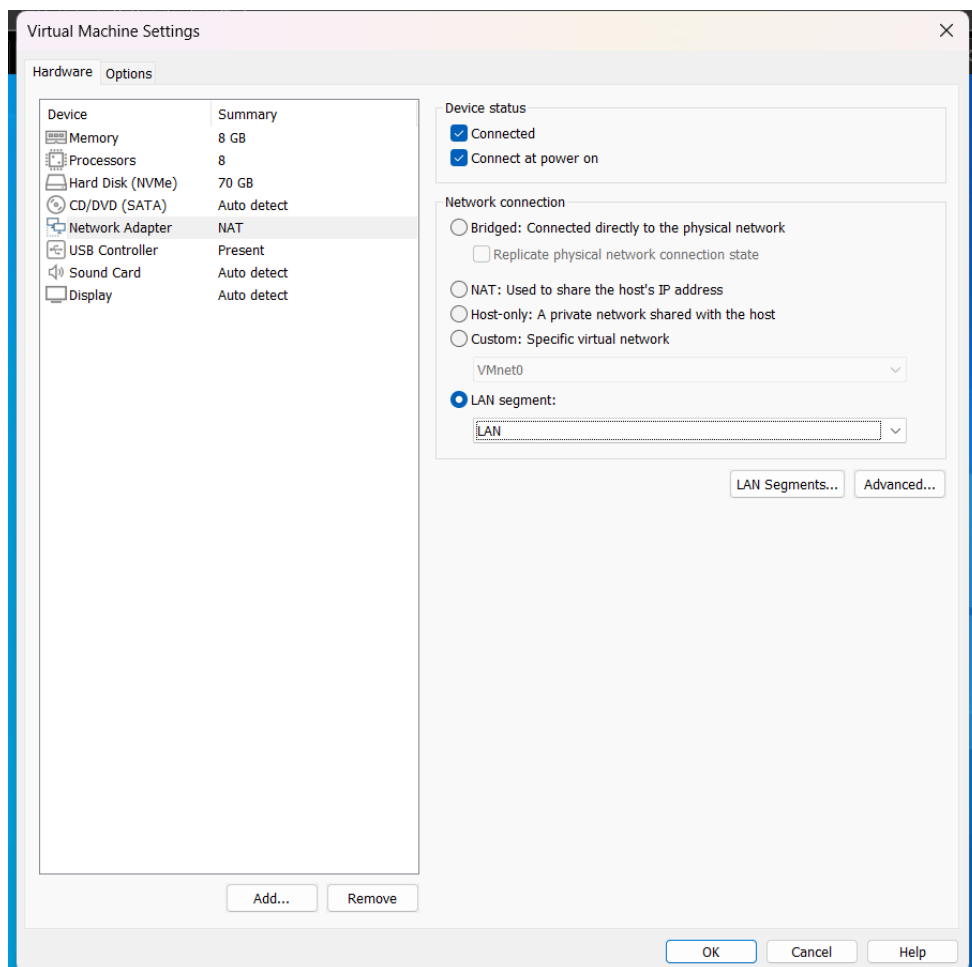
*** Welcome to pfSense 2.8.0-BETA (amd64) on pfSense ***

WAN (wan) -> em0 -> v4/DHCP4: 192.168.133.149/24
LAN (lan) -> em1 -> v4: 192.168.1.1/24
OPT1 (opt1) -> em2 ->

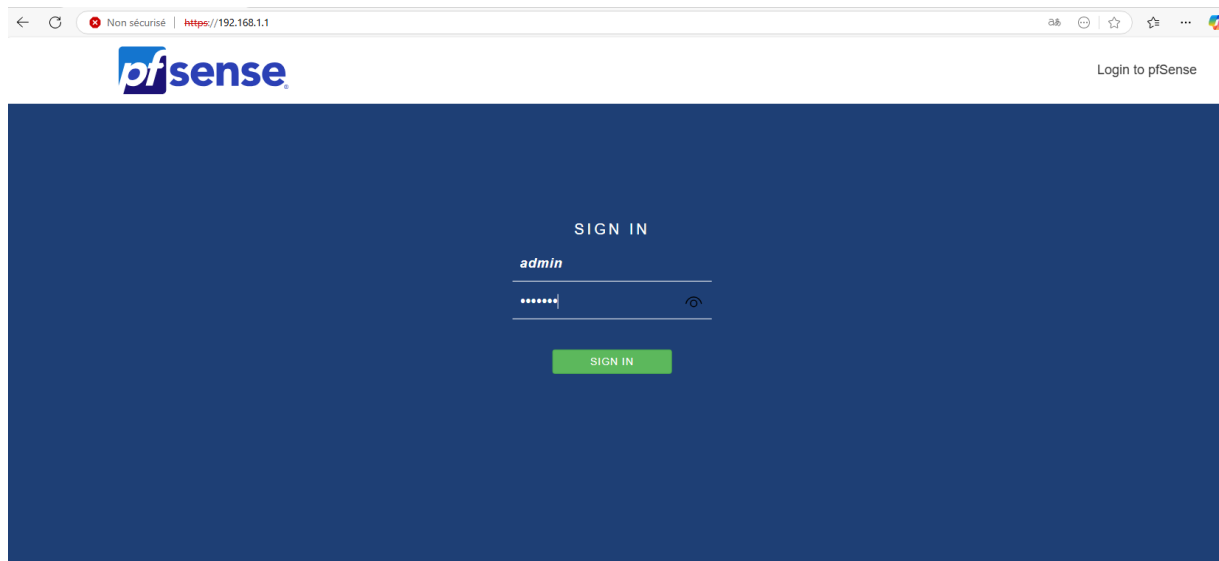
0) Logout / Disconnect SSH
1) Assign Interfaces
2) Set interface(s) IP address
3) Reset admin account and password
4) Reset to factory defaults
5) Reboot system
6) Halt system
7) Ping host
8) Shell

9) pfTop
10) Filter Logs
11) Restart GUI
12) PHP shell + pfSense tools
13) Update from console
14) Enable Secure Shell (sshd)
15) Restore recent configuration
16) Restart PHP-FPM

Enter an option: █
```



## Accès à l'interface et configuration de la DMZ



Step 2 of 9

### General Information

On this screen the general pfSense parameters will be set.

**Hostname**  Name of the firewall host, without domain part.  
Examples: pfsense, firewall, edgefw

**Domain**  Domain name for the firewall.  
Examples: home.arpa, example.com

Do not end the domain name with '.local' as the final part (Top Level Domain, TLD). The 'local' TLD is widely used by mDNS (e.g. Avahi, Bonjour, Rendezvous, Airprint, Airplay) and some Windows systems and networked devices. These will not network correctly if the router uses 'local' as its TLD. Alternatives such as 'home.arpa', 'local.lan', or 'mylocal' are safe.

The default behavior of the DNS Resolver will ignore manually configured DNS servers for client queries and query root DNS servers directly. To use the manually configured DNS servers below for client queries, visit Services > DNS Resolver and enable DNS Query Forwarding after completing the wizard.

**Primary DNS Server**

**Secondary DNS Server**

**Override DNS** ☒ Allow DNS servers to be overridden by DHCP/PPP on WAN

[» Next](#)

**WARNING:**  
The password for this account is insecure. Password is currently set to the default value (pfsense).  
Change the password as soon as possible.

Wizard / pfSense Setup / Configure LAN Interface

Step 5 of 9

### Configure LAN Interface

On this screen the Local Area Network information will be configured.

LAN IP Address

Type dhcp if this interface uses DHCP to obtain its IP address.

Subnet Mask

>> Next

Wizard / pfSense Setup / Change admin Account Password

Step 6 of 9

### Change admin Account Password

Change the password for the admin account.

This account is used to access the GUI, console (if protected), and SSH service (if enabled).

New admin Password

Confirm admin Password

>> Next

Step 9 of 9

### Wizard completed.

**Congratulations! pfSense is now configured.**

We recommend that you check to see if there are any software updates available. Keeping your software up to date is one of the most important things you can do to maintain the security of your network.

[Check for updates](#)

**Remember, we're here to help.**

[Click here](#) to learn about Netgate 24/7/365 support services.

#### User survey

Please help all the people involved in improving and expanding pfSense software by taking a moment to answer this short survey (all answers are anonymous)

[Anonymous User Survey](#)

#### Useful resources.

- Learn more about Netgate's product line, services, and pfSense software from our [website](#)
- To learn about Netgate appliances and other offers, [visit our store](#)
- Become part of the pfSense community. Visit our [forum](#)
- Subscribe to our [newsletter](#) for ongoing product information, software announcements and special offers.

Finish

General Configuration

Enable

☒ Enable interface

Description

DMZ

Enter a description (name) for the interface here.

IPv4 Configuration Type

Static IPv4

None

Static IPv4

DHCP

PPP

PPPoE

PPTP

L2TP

IPv6 Configuration Type

Static IPv4

MAC Address

MTU

If this field is blank, the adapter's default MTU will be used. This is typically 1500 bytes but can vary in some circumstances.

MSS

If a value is entered in this field, then MSS clamping for TCP connections to the value entered above minus 40 for IPv4 (TCP/IPv4 header size) and minus 60 for IPv6 (TCP/IPv6 header size) will be in effect.

Speed and Duplex

Default (no preference, typically autoselect)

Explicitly set speed and duplex mode for this interface.

WARNING: MUST be set to autoselect (automatically negotiate speed) unless the port this interface connects to has its speed and duplex forced.

Static IPv4 Configuration

IPv4 Address

192.168.2.1

/ 24

IPv4 Upstream gateway

None

+ Add a new gateway

If this interface is an Internet connection, select an existing Gateway from the list or add a new one using the "Add" button.

Version: 6.00

Release Date: **Thu Nov 12 2020**

Boot Method: BIOS

Version

**2.8.0-BETA** (amd64)  
built on Thu Apr 10 0:59:00 UTC 2025  
FreeBSD 15.0-CURRENT  
  
The system is on the latest version.  
Version information updated at Mon Apr 14 8:35:42 UTC 2025

CPU Type

12th Gen Intel(R) Core(TM) i5-12500H  
AES-NI CPU Crypto: Yes (inactive)  
QAT Crypto: No

Hardware crypto

Inactive

Kernel PTI

Enabled

MDS Mitigation

Inactive

Uptime

00 Hour 18 Minutes 13 Seconds

Current date/time

Mon Apr 14 8:53:12 UTC 2025

DNS server(s)

- 127.0.0.1
- ::1
- 192.168.133.2

Last config change

Mon Apr 14 8:46:18 UTC 2025

State table size

0% (18/96000) [Show states](#)

MBUF Usage

0% (2540/1000000)

Load average

0.72, 0.70, 0.54

CPU usage

3%

If you purchased your pfSense gateway firewall appliance from Netgate and elected **Community Support** at the point of sale or installed pfSense on your own hardware, you have access to various community support resources. This includes the [NETGATE RESOURCE LIBRARY](#).

You also may upgrade to a Netgate Global Technical Assistance Center (TAC) Support subscription. We're always on! Our team is staffed 24x7x365 and committed to delivering enterprise-class, worldwide support at a price point that is more than competitive when compared to others in our space.

- [Upgrade Your Support](#)
- [Community Support Resources](#)
- [Netgate Global Support FAQ](#)
- [Official pfSense Training by Netgate](#)
- [Netgate Professional Services](#)
- [Visit Netgate.com](#)

If you decide to purchase a Netgate Global TAC Support subscription, you **MUST** have your **Netgate Device ID (NDI)** from your firewall in order to validate support for this unit. Write down your NDI and store it in a safe place. You can purchase TAC supports [here](#).

Interfaces

WAN

↑

1000baseT <full-duplex>

192.168.133.149

LAN

↑

1000baseT <full-duplex>

192.168.1.1

DMZ

↑

1000baseT <full-duplex>

192.168.2.1

14



Local Database)

FreeBSD/amd64 (pfSense.home.arpa) (ttyv0)

VMware Virtual Machine - Netgate Device ID: 7105fccf1f3e0d7a778b

\*\*\* Welcome to pfSense 2.8.0-BETA (amd64) on pfSense \*\*\*

WAN (wan) -> em0 -> v4/DHCP4: 192.168.133.149/24

LAN (lan) -> em1 -> v4: 192.168.1.1/24

DMZ (opt1) -> em2 -> v4: 192.168.2.1/24

- |                                     |                                  |
|-------------------------------------|----------------------------------|
| 0) Logout / Disconnect SSH          | 9) pfTop                         |
| 1) Assign Interfaces                | 10) Filter Logs                  |
| 2) Set interface(s) IP address      | 11) Restart GUI                  |
| 3) Reset admin account and password | 12) PHP shell + pfSense tools    |
| 4) Reset to factory defaults        | 13) Update from console          |
| 5) Reboot system                    | 14) Enable Secure Shell (sshd)   |
| 6) Halt system                      | 15) Restore recent configuration |
| 7) Ping host                        | 16) Restart PHP-FPM              |
| 8) Shell                            |                                  |

Enter an option: █